



FortiGate® 300D

High Performance, Top-rated Network Security for Mid-sized Enterprises



FortiGate 300D

Roughly half of all cyber attacks target mid-sized or smaller businesses and the attack landscape continues to grow with higher volume and sophistication. Plus, network bandwidth requirements are still doubling every 18 months. Mid-sized enterprises need network security that delivers industry-leading high-speed performance and next generation security effectiveness.

5 Times Next Generation Performance

The FortiGate 300D appliance delivers superior performance through a combination of purpose-built FortiASIC™ processors, high gigabit port density and consolidated security features from the FortiOS™ operating system. It delivers 5 times better next generation firewall performance compared to alternate products and provides the best price/performance in the industry.

Deeper Visibility and Top-rated Security

This breakthrough threat prevention performance allows organizations to run NSS Labs Recommended intrusion prevention and application control and VB100 certified anti-malware capabilities for deeper inspection. Rich console views and reports together with a flexible policy engine provide the visibility and control to empower employees yet secure your enterprise.

Finally, these features of the FortiGate FortiOS Network Security Platform are routinely validated by independent real-world tests and consistently getting superior ratings in security effectiveness.

Highlights

Firewall Performance	IPS Performance	Interfaces
8 Gbps	2.8 Gbps	Multiple GE RJ45, GE SFP and GE RJ45 Management

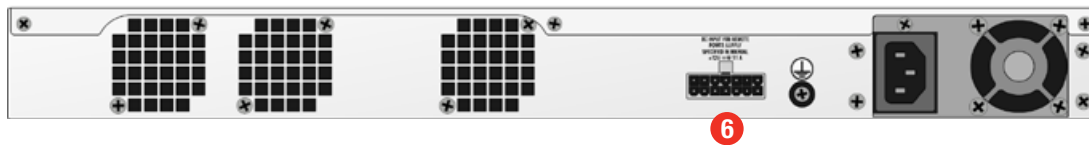
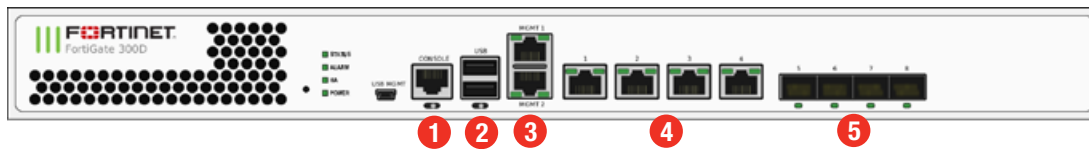
Features & Benefits

- 5 times faster hardware accelerated next generation firewall offers best-in-class price/performance ratio
- Integrated high port density delivers maximum flexibility and scalability
- NSS Labs Recommended NGFW and NGIPS with consolidated security delivers top-rated protection
- Application control plus identity and device-based policy enforcement provides more granular protection
- Intuitive management interface enables broad and deep visibility that scales from a single FortiGate to thousands



HARDWARE

FortiGate 300D



Interfaces

- | | |
|--------------------------------|---------------------|
| 1. Console Port (RJ45) | 4. 4x GE RJ45 Ports |
| 2. 2x USB Ports | 5. 4x GE SFP Slots |
| 3. 2x GE RJ45 Management Ports | 6. FRPS Connector |



Powered by FortiASICs

- Custom FortiASIC™ processors deliver the power you need to detect malicious content at multi-Gigabit speeds.
- Other security technologies cannot protect against today's wide range of content and connection-based threats well because they rely on general-purpose CPUs, causing a dangerous performance gap.
- FortiASIC processors provide the performance needed to block emerging threats, met rigorous third-party certifications, and ensure that your network security solution does not become a network bottleneck.

Content Processor

The FortiASIC CP8 content processor works outside of the direct flow of traffic, providing high-speed cryptography and content inspection services including:

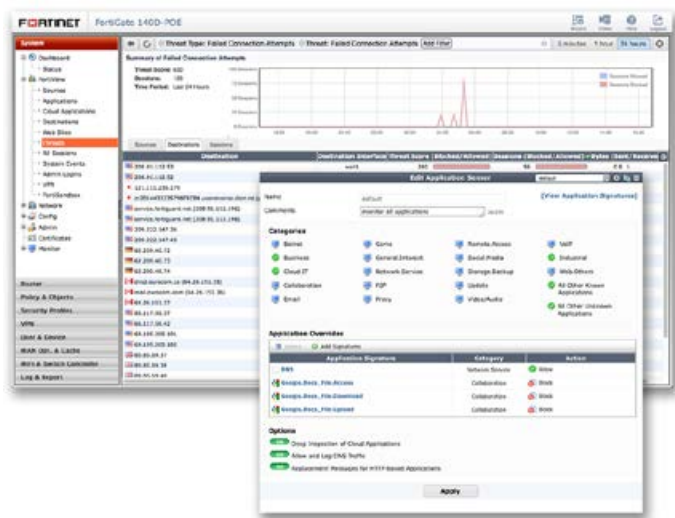
- Signature-based content inspection acceleration
- Encryption and decryption offloading

Network Processor

Fortinet's new, breakthrough FortiASIC NP6 network processor works inline with FortiOS functions delivering:

- Superior firewall performance for IPv4/IPv6, SCTP and multicast traffic with ultra-low latency down to 2 microseconds
- VPN, CAPWAP and IP tunnel acceleration
- Anomaly-based intrusion prevention, checksum offload and packet defragmentation
- Traffic shaping and priority queuing

SOFTWARE



FortiOS Management UI — FortiView and Application Control Panel

FortiOS

FortiOS helps you protect your organization against advanced threats, configure and deploy your network security faster and see deep into what's happening inside your network. It enables organization to set up policies specific to types of devices, users and applications with industry-leading security capabilities. FortiOS leverages custom FortiASICs and the Optimum Path Processing architecture of FortiGate to deliver 5 times faster throughput performance. In essence, FortiOS delivers:

- **Comprehensive Security** — Control thousands of applications and stop more threats with NSS Labs Recommended IPS, sandboxing, VB100 certified antimalware and more.
- **Superior Control and Visibility** — Stay in control with rich visibility over network traffic, granular policy control, and intuitive, scalable security and network management.
- **Robust Networking Capabilities** — Optimize your network with extensive switching and routing, high availability, WAN optimization, embedded WiFi controller, and a range of virtual options.



For more information, please refer to the FortiOS data sheet available at www.fortinet.com

SERVICES

FortiGuard™ Security Services

FortiGuard Labs offers real-time intelligence on the threat landscape, delivering comprehensive security updates across the full range of Fortinet's solutions. Comprised of security threat researchers, engineers, and forensic specialists, the team collaborates with the world's leading threat monitoring organizations, other network and security vendors, as well as law enforcement agencies:

- **Real-time Updates** — 24x7x365 Global Operations research security intelligence, distributed via Fortinet Distributed Network to all Fortinet platforms.
- **Security Research** — FortiGuard Labs have discovered over 170 unique zero-day vulnerabilities to date, totaling millions of automated signature updates monthly.
- **Validated Security Intelligence** — Based on FortiGuard intelligence, Fortinet's network security platform is tested and validated by the world's leading third-party testing labs and customers globally.



For more information, please refer to <http://forti.net/guard>

FortiCare™ Support Services

Our FortiCare customer support team provides global technical support for all Fortinet products. With support staff in the Americas, Europe, Middle East and Asia, FortiCare offers services to meet the needs of enterprises of all sizes:

- **Enhanced Support** — For customers who need support during local business hours only.
- **Comprehensive Support** — For customers who need around-the-clock mission critical support, including advanced exchange hardware replacement.
- **Premium Services** — For global or regional customers who need an assigned Technical Account Manager, enhanced service level agreements, extended software support, priority escalation, on-site visits and more.
- **Professional Services** — For customers with more complex security implementations that require architecture and design services, implementation and deployment services, operational services and more.



For more information, please refer to <http://forti.net/care>

SPECIFICATIONS

FORTIGATE 300D	
Interfaces and Modules	
GE RJ45 Interfaces	4
GE SFP Slots	4
GE RJ45 Management Ports	2
USB (Client / Server)	1 / 2
RJ45 Console Port	1
Local Storage	120 GB SSD
Included Transceivers	2x SFP (SX 1 GE)
System Performance and Capacity	
Iv4 Firewall Throughput (1518 / 512 / 64 byte, UDP)	8 / 8 / 8 Gbps
Firewall Latency (64 byte, UDP)	3 µs
Firewall Throughput (Packet per Second)	12 Mpps
Concurrent Sessions (TCP)	6 Million
New Sessions/Second (TCP)	200,000
Firewall Policies	10,000
IPsec VPN Throughput (512 byte)	7 Gbps
Gateway-to-Gateway IPsec VPN Tunnels	2,000
Client-to-Gateway IPsec VPN Tunnels	10,000
SSL-VPN Throughput	350 Mbpps
Concurrent SSL-VPN Users (Recommended Maximum)	500
IPS Throughput	2.8 Gbps
Antivirus Throughput	1.4 Gbps
CAPWAP Clear-text Throughput (HTTP)	4.00 Gbps
Virtual Domains (Default / Maximum)	10 / 10
Maximum Number of FortiAPs (Total / Tunnel)	512 / 256
Maximum Number of FortiTokens	1,000
Maximum Number of Registered Endpoints	600
High Availability Configurations	Active-Active, Active-Passive, Clustering

FORTIGATE 300D	
Dimensions and Power	
Height x Width x Length (inches)	1.73 x 17 x 12.68
Height x Width x Length (mm)	44 x 432 x 322
Weight	10.5 lbs (4.8 kg)
Form Factor	1 RU
Power Consumption (Average / Maximum)	106 W / 194 W
Power Source	100–240V AC, 60–50Hz
Current (Maximum)	110V/4A, 220V/2A
Heat Dissipation	660 BTU/h
Operating Environment and Certifications	
Operating Temperature	32–104°F (0–40°C)
Storage Temperature	31–158°F (-35–70°C)
Humidity	20–90% non-condensing
Operating Altitude	Up to 7,400 ft (2,250 m)
Compliance	FCC Part 15 Class A, C-Tick, VCCI, CE, UL/cUL, CB
Certifications	ICSA Labs: Firewall, IPsec, IPS, Antivirus, SSL-VPN

Note: All performance values are "up to" and vary depending on system configuration. Antivirus performance is measured using 44 Kbyte HTTP files. IPS performance is measured using 1 Mbyte HTTP files. IPsec VPN performance is based on 512 byte UDP packets using AES-256+SHA. Antivirus Throughput is measured in proxy mode.

For complete, up-to-date and detailed feature set, please refer to the Administration Handbook and FortiOS Datasheet.

ORDER INFORMATION

Product	SKU	Description
FortiGate 300D	FG-300D	6x GE RJ45 ports, 4x GE SFP slots, FortiASIC NP6 and CP8 hardware accelerated, 120 GB onboard storage.
Optional Accessories		
Redundant AC Power Supply	FRPS-100	External redundant AC power supply for up to 4 units: FG-300C, FG-310B, FS-348B and FS-448B. Up to 2 units: FG-200B, FG-200D, FG-240D and FG-300D, FG-400D, FG-500D, FDD-200B, FDD-400B and FDD-800B. Not supported for: FG-200D-POE/240D-POE.
1 GE SFP LX Transceiver Module	FG-TRAN-LX	1 GE SFP LX transceiver module for all systems with SFP and SFP/SFP+ slots.
1 GE SFP RJ45 Transceiver Module	FG-TRAN-GC	1 GE SFP RJ45 transceiver module for all systems with SFP and SFP/SFP+ slots.
1 GE SFP SX Transceiver Module	FG-TRAN-SX	1 GE SFP SX transceiver module for all systems with SFP and SFP/SFP+ slots.



GLOBAL HEADQUARTERS
Fortinet Inc.
899 Kifer Road
Sunnyvale, CA 94086
United States
Tel: +1.408.235.7700
www.fortinet.com/sales

EMEA SALES OFFICE
120 rue Albert Caquot
06560, Sophia Antipolis,
France
Tel: +33.4.8987.0510

APAC SALES OFFICE
300 Beach Road 20-01
The Concourse
Singapore 199555
Tel: +65.6513.3730

LATIN AMERICA SALES OFFICE
Prol. Paseo de la Reforma 115 Int. 702
Col. Lomas de Santa Fe,
C.P. 01219
Del. Alvaro Obregón
México D.F.
Tel: 011-52-(55) 5524-8480