



FortiGate/FortiWiFi®
60D-3G4G-VZW

Unified Threat Management
with Built-in 3G/4G Modem



FortiGate/FortiWiFi 60D-3G4G-VZW

The FortiGate/FortiWiFi 60D-3G4G series of consolidated security appliances deliver comprehensive enterprise-class protection for smaller locations, branch offices, customer premise equipment (CPE) and retail networks. The embedded 3G/4G wireless modem provides a cost-effective and rapidly deployable WAN connectivity option that reduces network complexity and increases network uptime. Simple per-device pricing, an integrated management console, and remote management capabilities significantly reduce your procurement, deployment and administration costs.

FortiGate/FortiWiFi 60D-3G4G-VZW sports an embedded wireless wan module for 3G/4G mobile data applications. Powered by Qualcomm® MDM9600 chipset, this FortiWiFi platform offers high performance Internet connectivity on LTE 700 MHz with fallback to CDMA and HSPA+/UMTS and is certified for Verizon Wireless Network in US.

The Power of Unified Threat Management

FortiGate consolidated security appliances deliver an unmatched range of security technologies. They integrate essential firewall, IPSec and SSL VPN, application control, intrusion prevention, antivirus, and web filtering protection into a single device at a single price, all managed from a “single-pane-of-glass” console. They also include other security technologies, such as data loss prevention (DLP), encrypted SSL inspection, endpoint NAC, WAN optimization, and vulnerability management. In addition, Fortinet’s FortiGuard® Labs is on duty around the clock and around the world, monitoring changes in the threat landscape. FortiGuard Labs deliver dynamic threat updates to protect your network against emerging threats.

Highlights

| Firewall Performance | IPS Performance | Interfaces |
|----------------------|-----------------|---------------|
| 1.5 Gbps | 200 Mbps | Multiple RJ45 |

Features & Benefits

- 1.5 Gbps throughput performance ensures your network security won't be a bottleneck
- Integrated switch and options for PoE simplify your network infrastructure
- Up to 2x WAN, 7x LAN and 1x DMZ interface ports (2x Power over Ethernet ports on PoE models)
- Runs on FortiOS 5 – the most powerful security operating system in the world delivers more security to fight advanced threats, more control to secure mobile devices, and more intelligence to build secure policies



HARDWARE

FortiGate/FortiWiFi 60D-3G4G-VZW



Interfaces

- | | |
|---|---|
| <ul style="list-style-type: none"> 1. USB Management Port for FortiExplorer 2. 2x 10/100/1000 WAN Interfaces 3. 1x 10/100/1000 DMZ Interfaces 4. 7x 10/100/1000 Internal Interfaces | <ul style="list-style-type: none"> 5. Internal 3G/4G Modem 6. 802.11 a/b/g/n Wireless Interface (FortiWiFi) |
|---|---|



Powered by
FortiASIC SoC2

- Combines a RISC-based CPU with Fortinet's proprietary FortiASIC™ content and network processors for unmatched performance
- Simplifies appliance design and enables breakthrough performance for smaller networks
- Supports firewall acceleration across all packet sizes for maximum throughput
- Delivers accelerated UTM content processing for superior performance and protection
- Accelerates VPN performance for high speed, secure remote access

Install in Minutes with FortiExplorer

The FortiExplorer™ wizard enables you to easily and quickly set up and configure FortiGate and FortiWiFi platforms with easy-to-follow instructions. The application runs on Windows, Mac OS X desktops and laptops as well as popular mobile devices. Simply connect to the appropriate USB port on the appliance, and be fully protected in minutes.

3G/4G WAN Connectivity

The FortiGate/FortiWiFi 60D-3G4G includes built-in 3G/4G modem that allows additional WAN connectivity or a redundant link for maximum reliability.

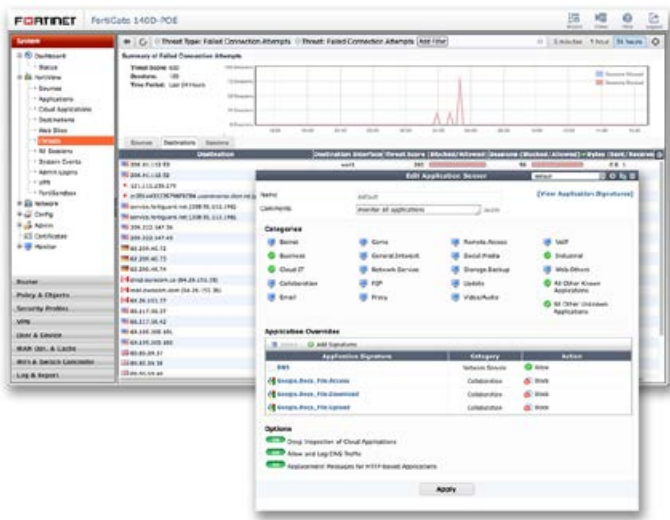
Compact and Reliable Form Factor

Designed for small environments, you can place it on a desktop or wall-mount it. It is small, lightweight yet highly reliable with superior MTBF (Mean Time Between Failure), minimizing the chance of a network disruption.

Superior Wireless Coverage

A built-in dual-band, dual-stream access point with internal antennas is integrated on the FortiWiFi 60D and provides speedy 802.11n coverage on both 2.4 GHz and 5 GHz bands. The dual-band chipset addresses the PCI-DSS compliance requirement for rogue AP wireless scanning, providing maximum protection for regulated environments.

SOFTWARE



FortiOS Management UI — FortiView and Application Control Panel

FortiOS

FortiOS helps you protect your organization against advanced threats, configure and deploy your network security faster and see deep into what's happening inside your network. It enables organization to set up policies specific to types of devices, users and applications with industry-leading security capabilities. FortiOS leverages custom FortiASICs and the Optimum Path Processing architecture of FortiGate to deliver 5 times faster throughput performance. In essence, FortiOS delivers:

- **Comprehensive Security** — Control thousands of applications and stop more threats with NSS Labs Recommended IPS, sandboxing, VB100 certified antimalware and more.
- **Superior Control and Visibility** — Stay in control with rich visibility over network traffic, granular policy control, and intuitive, scalable security and network management.
- **Robust Networking Capabilities** — Optimize your network with extensive switching and routing, high availability, WAN optimization, embedded WiFi controller, and a range of virtual options.



For more information, please refer to the FortiOS data sheet available at www.fortinet.com

SERVICES

FortiGuard™ Security Services

FortiGuard Labs offers real-time intelligence on the threat landscape, delivering comprehensive security updates across the full range of Fortinet's solutions. Comprised of security threat researchers, engineers, and forensic specialists, the team collaborates with the world's leading threat monitoring organizations, other network and security vendors, as well as law enforcement agencies:

- **Real-time Updates** — 24x7x365 Global Operations research security intelligence, distributed via Fortinet Distributed Network to all Fortinet platforms.
- **Security Research** — FortiGuard Labs have discovered over 170 unique zero-day vulnerabilities to date, totaling millions of automated signature updates monthly.
- **Validated Security Intelligence** — Based on FortiGuard intelligence, Fortinet's network security platform is tested and validated by the world's leading third-party testing labs and customers globally.



For more information, please refer to <http://forti.net/guard>

FortiCare™ Support Services

Our FortiCare customer support team provides global technical support for all Fortinet products. With support staff in the Americas, Europe, Middle East and Asia, FortiCare offers services to meet the needs of enterprises of all sizes:

- **Enhanced Support** — For customers who need support during local business hours only.
- **Comprehensive Support** — For customers who need around-the-clock mission critical support, including advanced exchange hardware replacement.
- **Premium Services** — For global or regional customers who need an assigned Technical Account Manager, enhanced service level agreements, extended software support, priority escalation, on-site visits and more.
- **Professional Services** — For customers with more complex security implementations that require architecture and design services, implementation and deployment services, operational services and more.



For more information, please refer to <http://forti.net/care>

SPECIFICATIONS

| | FG-60D-3G4G-VZW | FWF-60D-3G4G-VZW |
|--|-----------------|------------------|
| Interfaces and Modules | | |
| 10/100/1000 WAN Interfaces (RJ45) | | 2 |
| 10/100/1000 Internal Interfaces (RJ45) | | 7 |
| 10/100/1000 DMZ Interfaces (RJ45) | | 1 |
| Wireless Interface | — | 802.11 a/b/g/n |
| USB (Client / Server) | | 1 / 1 |
| RJ-45 Console Port | | 1 |

| Embedded Modem | | |
|----------------------------------|--|--|
| Embedded Modem Technology | LTE with fallback to EV-DO Rev A, 1xRTT | |
| Bands | LTE AWS, 700 MHz (B17) (with MIMO) HSPA+/UMTS 850/AWS/1900/2100 MHz GPRS 850/900/1800/1900 MHz | |
| MiMo | 2 x 2 MiMo | |
| Receiver Diversity | Yes, improves performance at cell edges and in buildings | |
| Receiver Equalization | Yes, improves performance in noisy and highly mobile environments | |
| Internal Antennas | 2 | |
| Supported LTE Band | 13 | |
| Removable SIM Card | Yes | |
| Signal Strength Indicator | Yes, in FortiOS GUI and CLI | |
| DIAG & AT Commands | Yes | |
| Auto-Connect / On Demand Connect | Yes | |
| Power Management | Standby and hibernate selective suspend | |
| Other Features | Connection status, data byte count, auto-select network, network profile, self diagnostics, private IP SIM support, IMEI located on outer box and device for easy activation | |

| System Performance and Capacity | | |
|---|---|--|
| IPv4 Firewall Throughput (1518 / 512 / 64 byte, UDP) | 1.5 / 1.5 / 1.5 Gbps | |
| Firewall Latency (64 byte, UDP) | 4 µs | |
| Firewall Throughput (Packet per Second) | 2.2 Mpps | |
| Concurrent Sessions (TCP) | 500,000 | |
| New Sessions/Second (TCP) | 4,000 | |
| Firewall Policies | 5,000 | |
| IPsec VPN Throughput (512 byte) | 1 Gbps | |
| Gateway-to-Gateway IPsec VPN Tunnels | 200 | |
| Client-to-Gateway IPsec VPN Tunnels | 500 | |
| SSL-VPN Throughput | 30 Mbps | |
| Concurrent SSL-VPN Users (Recommended Maximum) | 100 | |
| IPS Throughput | 200 Mbps | |
| Antivirus Throughput | 35 Mbps | |
| CAPWAP Clear-text Throughput (HTTP) | 210 Mbps | |
| Virtual Domains (Default / Maximum) | 10 / 10 | |
| Maximum Number of FortiAPs (Total / Tunnel) | 10 / 5 | |
| Maximum Number of FortiTokens | 100 | |
| Maximum Number of Registered Endpoints | 200 | |
| High Availability Configurations | Active-Active, Active-Passive, Clustering | |

| Dimensions and Power | |
|---------------------------------------|-----------------------|
| Height x Width x Length (inches) | 1.50 x 8.50 x 5.83 |
| Height x Width x Length (mm) | 38 x 216 x 148 |
| Weight | 1.9 lbs (0.9 kg) |
| Form Factor | Desktop |
| AC Power Supply | 100–240V AC, 50–60 Hz |
| Power Consumption (Average / Maximum) | 11.7 W / 14 W |
| Heat Dissipation | 40 BTU/h |

| Operating Environment and Certifications | |
|---|--|
| Operating Temperature | 32–104°F (0–40°C) |
| Storage Temperature | -31–158°F (-35–70°C) |
| Humidity | 20–90% non-condensing |
| Operating Altitude | Up to 7,400 ft (2,250 m) |
| Compliance | FCC Part 15 Class B, C-Tick, VCCI, CE, UL/cUL, CB, RoHS, Halogen Free |
| Security Certifications | ICSA Labs: Firewall, IPsec, IPS, Antivirus, SSL VPN |
| Other Certifications | Certified for use on Verizon Network, 3GPP TS 36.101 (LTE), 3GPP Rel 5, 6, 7, 8 (HSPA+), 3GPP Release 99 (GSM/GPRS/EDGE), CCF57, PTCRB, SUPL 2.0 |

Note: All performance values are "up to" and vary depending on system configuration. Antivirus performance is measured using 44 Kbyte HTTP files. IPS performance is measured using 1 Mbyte HTTP files. IPsec VPN performance is based on 512 byte UDP packets using AES-256+SHA1. LAG support is limited to certain port configurations, please refer to technical documentation. Antivirus Throughput is measured in proxy mode.

For complete, up-to-date and detailed feature set, please refer to the Administration Handbook and FortiOS Datasheet.

ORDER INFORMATION

| Product | SKU | Description |
|------------------------|------------------|--|
| FortiGate 60D-3G4G-VZW | FG-60D-3G4G-VZW | 10x GE RJ45 ports (including 7x Internal ports, 2x WAN ports, 1x DMZ port), embedded 3G/4G/LTE wireless WAN modem for use on Verizon Wireless network. Maximum managed FortiAPs (Total / Tunnel) 10 / 5. |
| FortiWiFi 60D-3G4G-VZW | FWF-60D-3G4G-VZW | 10x GE RJ45 ports (including 7x Internal ports, 2x WAN ports, 1x DMZ port), Wireless (802.11a/b/g/n), embedded 3G/4G/LTE wireless WAN modem for use on Verizon Wireless network. Maximum managed FortiAPs (Total / Tunnel) 10 / 5. |



GLOBAL HEADQUARTERS
Fortinet Inc.
899 Kifer Road
Sunnyvale, CA 94086
United States
Tel: +1.408.235.7700
www.fortinet.com/sales

EMEA SALES OFFICE
120 rue Albert Caquot
06560, Sophia Antipolis,
France
Tel: +33.4.8987.0510

APAC SALES OFFICE
300 Beach Road 20-01
The Concourse
Singapore 199555
Tel: +65.6513.3730

LATIN AMERICA SALES OFFICE
Prol. Paseo de la Reforma 115 Int. 702
Col. Lomas de Santa Fe,
C.P. 01219
Del. Alvaro Obregón
México D.F.
Tel: 011-52-(55) 5524-8480